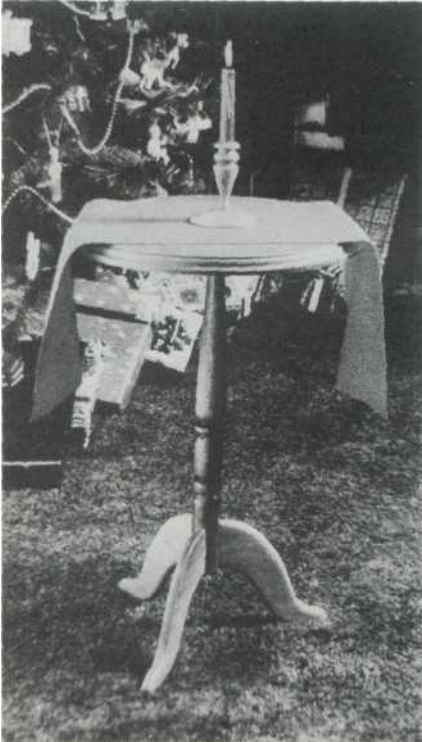


146

CONCORD TABLE



Also known as a candle stand table, this traditional favorite can be made quickly using a lathe. It lends itself to being a gift item as well.

1. Cut the stock to size according to the dimensions provided.
2. To make the template for the spindle (A), lay out the pattern on a piece of 1/4"-thick stock. Use a scroll saw, bandsaw, or jigsaw to cut out the pattern, and sand the edges smooth.
3. Mount the spindle stock on the lathe, turn the spindle, then sand. (If you glue up stock, it must be clamped for at least 24 hours before turning.)
4. Make a template for the legs (C) in the same manner, cut out the

legs, and sand the curves on a drum sander.

Drill 3/8"-diameter holes to accommodate the dowels in the legs as shown.

6. Use a router with a 1/4" rounding over bit to shape the curved edges of the legs. Do not shape the straight sections.

7. On the drum sander, sand a concave curve in the straight portion of the legs. This will provide a better fit when attaching the legs to the spindle.

8. Mark and drill two 3/8"-diameter holes in the spindle base as shown to accommodate the dowels. Glue the legs to the spindle, one at a time, and allow each leg

time to set up. Make sure the bottoms of the legs are square to the outside of the spindle.

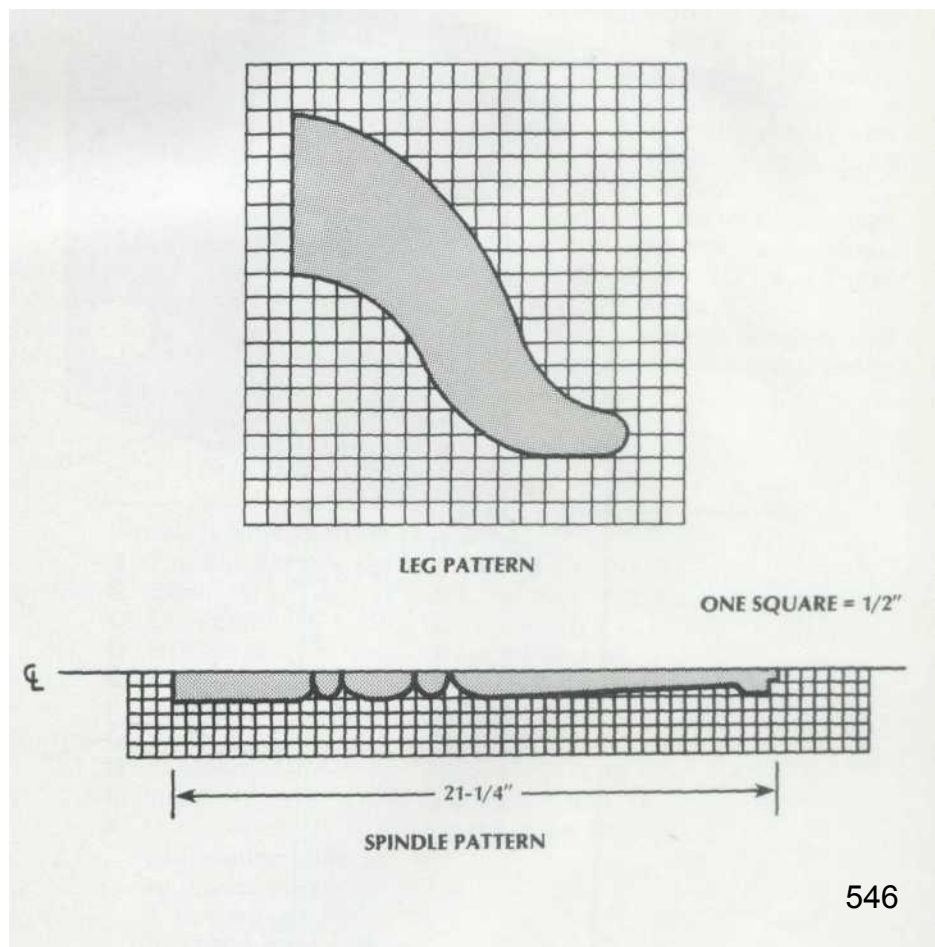
9. Glue and clamp the stock for the top (B). When the glue has dried, lay out the 16"-diameter circle and cut it out using a scroll saw, bandsaw, or jigsaw.

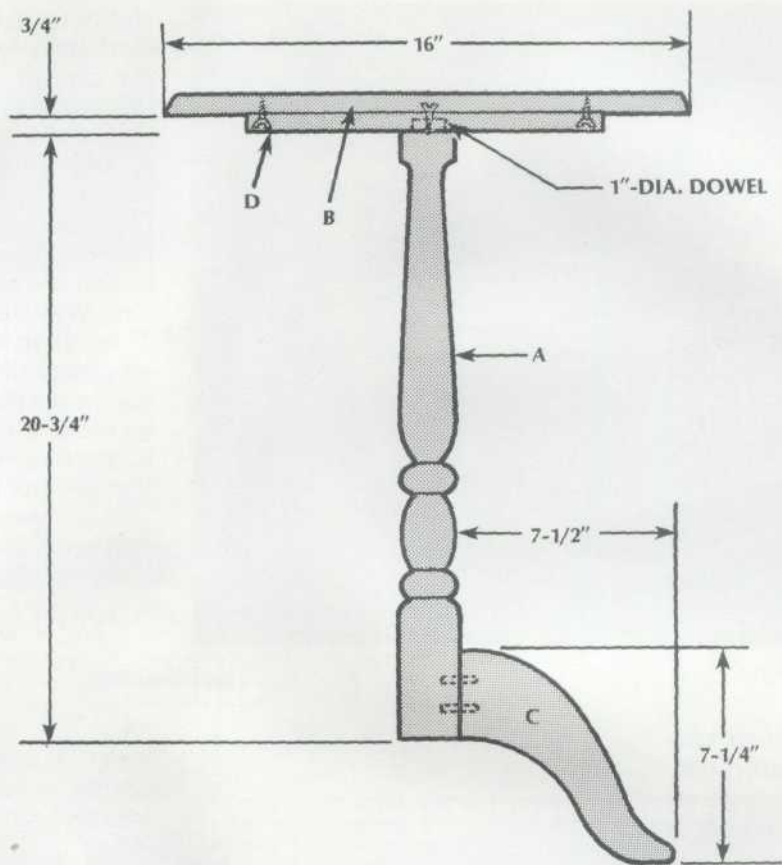
10. Disc sand the edges of the top. The top edge can be shaped with a router and a roman ogee bit.

11. Drill a 1"-diameter hole in the center of the top brace (D) to accommodate the dowel.

12. Screw the top brace to the spindle, then screw the top to the top brace. Glue can be used for extra reinforcement.

13. Finish the table as desired.





LIST OF MATERIALS

(finished dimensions in inches)

A	Spindle	2 dia. × 21-1/4
B	Top	3/4 × 16 dia.
C	Legs (3)	3/4 × 7-1/4 × 7-1/2
D	Top brace	3/4 × 3 × 12
	Wood screws	
	Dowels (10)	3/8 dia. × 1-1/2
	Wood glue	