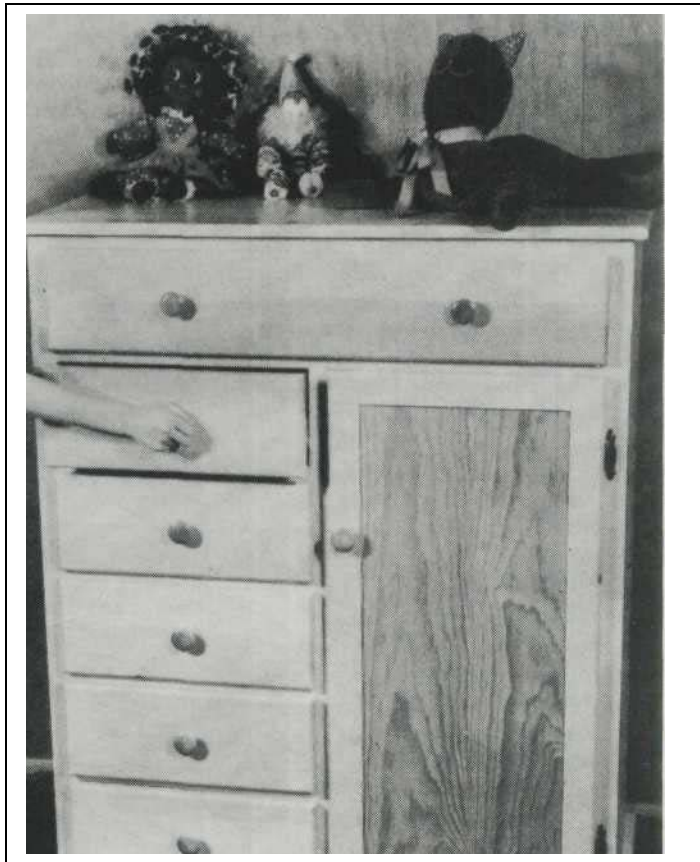


59

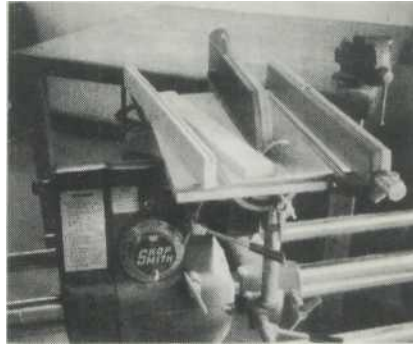
CHILD'S ARMOIRE



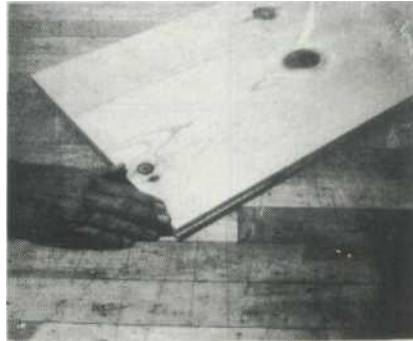
THIS CHILD'S ARMOIRE will make it easy for kids to keep their rooms neat and orderly. Its six drawers and two shelves provide enough storage space to house a substantial wardrobe. By following a simple modification to be described below, the shelf compartment can even be replaced with a small closet complete with clothes pole for hanging dresses, suits, or coats. Best of all, the ar-moire is designed especially with the pint-sized set in mind. No more standing on tippy toes just to reach a clean pair of socks!

Before starting on the project, carefully study all photos, diagrams, lists, and building instructions. One attractive feature worth noting at the outset is that no fancy joinery is required. With the exception of a few simple rabbets, nothing more complicated than butt joints is called for. On all of these joints, use 1 1/4" finish nails and glue unless otherwise specified. Another plus is that only the most basic of shop tools are needed, although a router is essential, and you'll probably also find a table saw to be helpful.

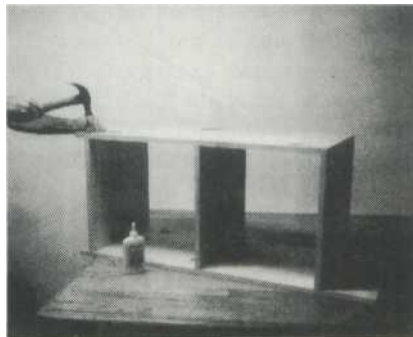
Because of the variety of dimensions encountered in the plan, we've simply indicated the total amount of 3/4" pine required, which is 47 board feet. This figure allows approximately 15% for scrap. When shopping at the lumberyard, bear in mind that the largest single width of pine called for in the plan is 6 3/8" (parts V and W). Procuring the hardware should not be much of a problem. If you do have difficulty, though, a complete



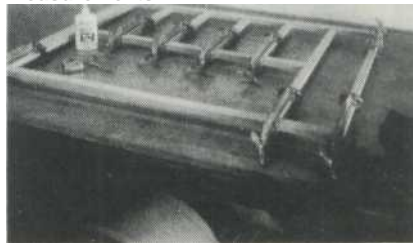
The first step is to cut all wood to proper size. Refer to the cutting schedule and Details 1 and 2 for further instructions.



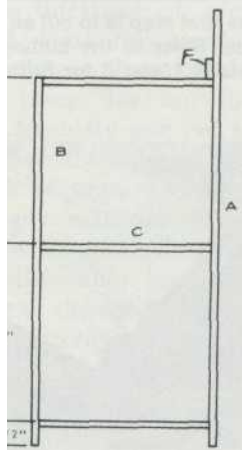
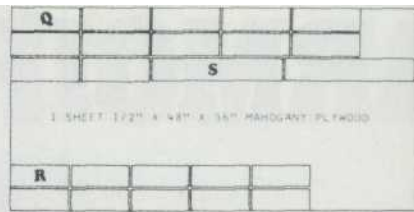
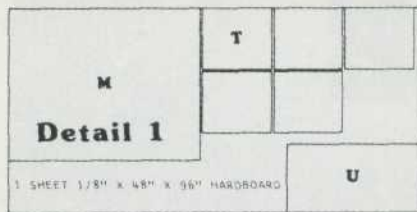
Glue boards together to make up boards A, B, C, and N. With a router, cut a thin rabbet on the back inside edge of board A.



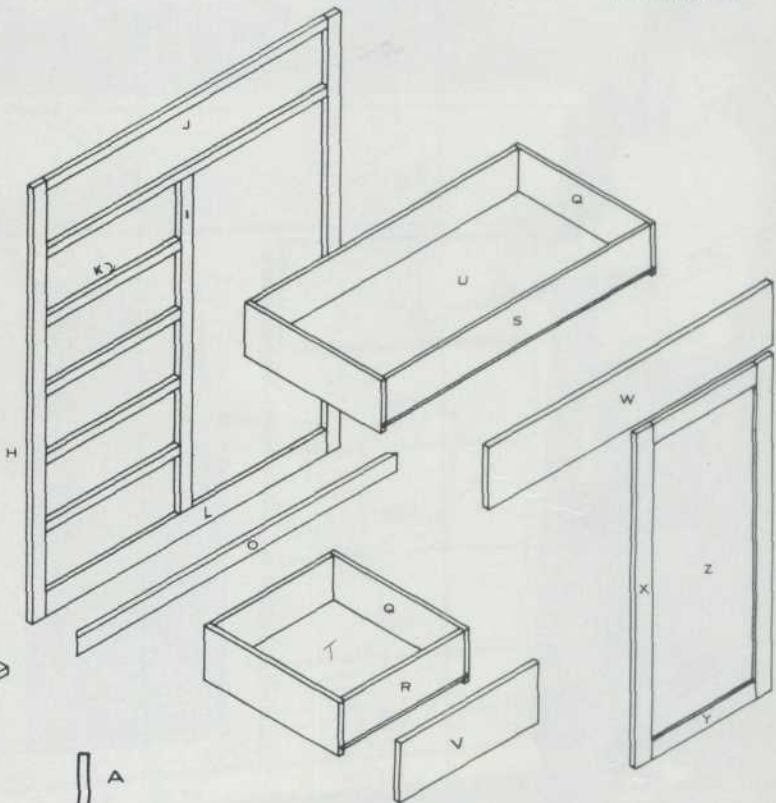
Attach A to boards B, and C. Attach board B to boards C. Don't forget to check for squareness. See Detail 3 for measurements



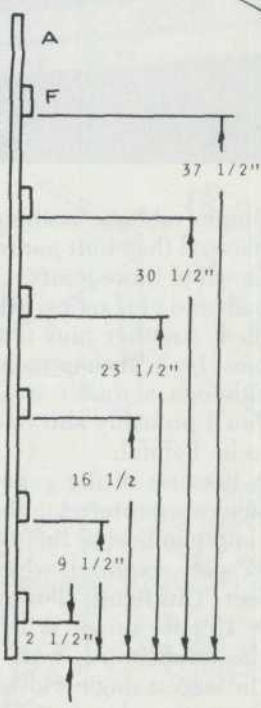
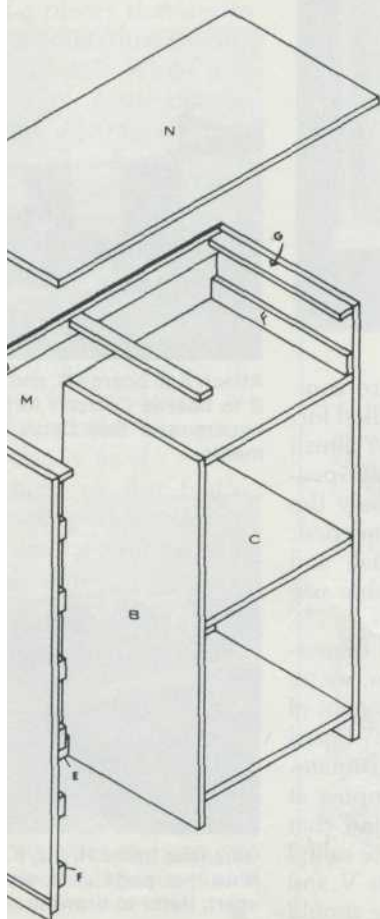
Glue face frame H, I, J, K, and L together. Note that parts J, K, and L are each 6" apart. Refer to drawing on the next page.



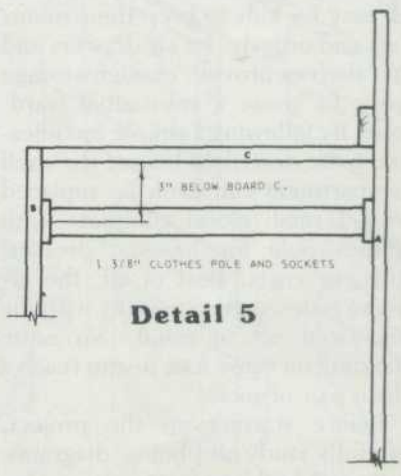
Detail 3



Detail 2



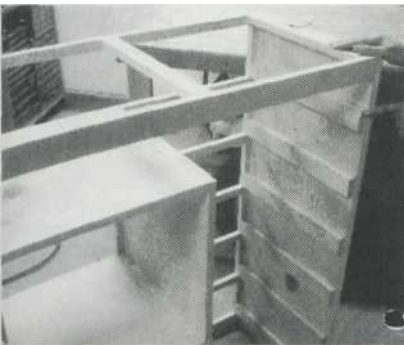
Detail 4



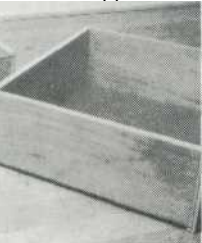
Detail 5



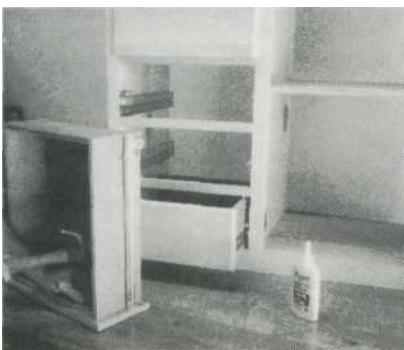
Attach face frame to A, B, and C. Attach upper back crosspiece D to boards A. Attach lower crosspiece E to A and B.



Attach two boards G to A, D, and J. Attach one board G to the center of D and J. Then attach drawer supports F to both boards A.



Nail Q to R using 1" brads. Slide hard-board T into groove in Q and nail. Follow the same procedure for the large drawer.



Attach drawer guides to boards Q and F. Nail the drawer fronts R and S to the drawer face panels using brads and glue.

set of hardware, replete with mounting instructions and all necessary screws, can be ordered through the mail. Write to the address found at the end of this article for more information.

Cutting the Parts. Begin by cutting all parts down to their proper sizes as indicated on the cutting schedule. Consult the panel layouts in Details 1 and 2 before cutting out parts M, Q, R, S, T, and U. Parts A, B, C, and N are formed by gluing smaller boards together. This not only saves you the trouble of hunting down unusually large widths of lumber, but is also an excellent strategy for avoiding possible warpage. Of course, whenever you build up large boards from smaller ones in this way, it's a good idea to use dowels for extra strength. When cutting out the parts, note that only two shelves (C) are needed if you intend to make the cabinet space into a closet.

With a router, cut a rabbet into the back inside edge of each part A side piece; this is to allow for the eventual placement of the rear hard-board panel (M). Similarly, cut grooves into the lower inside edge of each of the drawer sides (Q) to provide access for the hardboard drawer bottoms (T and U). In the interests of safety, you'll also want to round off all of the exposed edges of the piece with a router. The upper edges of the top piece (N), for example, should be rounded off to a 1/4" radius, as should the outside edges of the drawers (parts V and W) and cabinet door (parts X and Y).

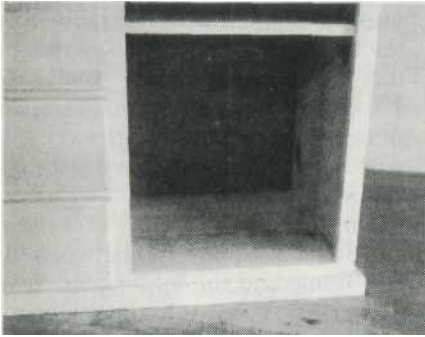
Construction. Start by building the cabinet compartment with parts B, C, and one part A. Refer to the accompanying photos and to Detail 3 for the proper placement of parts. If you intend to make a closet out of the shelf space, ignore the middle shelf board (C) shown in Detail 3. Check for squareness and accurate alignment of all parts. Next, assemble the face frame from parts II, I, J, K,

glue here, and drive the nails through part II (on the drawer side of the face frame) into the front edge of the side panel. To secure the construction, attach the upper back crosspiece (D) between the two parts A, following the placement indicated on the schematic. This crosspiece must be aligned with the rabbets on the two parts A in order to accommodate the rear hardboard panel (M). The lower back crosspiece (E), spanning from part B to the drawer-side part A, is similarly aligned with the rabbet on A.

On each side of the unit now, attach a top support (G) between the face frame and the upper rear cross-piece (D), as shown in the schematic and Detail 3. Then take the remaining part G top support and fasten it to parts D and J in the center of the unit. The drawer supports (F) are added next. Detail 3 shows how one part F is to be situated on the cabinet-side part A. The remaining six drawer supports are arranged on the drawer-side part A according to the measurements given on Detail 4. Once all the drawer supports are in place, carefully center the armoire top (N) and fasten it to parts D, G, and J. Set the unit aside now, and allow all glue to dry.

Drawers. Each of the five small drawers consists of two sides (Q), a front and back (both parts R), a hard-board bottom (T), and a face panel (V). Start by attaching the front and back to the sides with 1" brads and glue. As seen in the schematic, the tops of the two parts R are flush with the tops of the drawer sides. Next, slide the hardboard bottom (T) into the grooves of parts Q, and secure it with a nail or two. Repeat this procedure in assembling the large drawer from parts S, U, and the remaining parts Q.

Following the manufacturer's instructions, attach the 16" drawer guides now to the drawer supports (F) within the armoire unit and to the sides (Q) of each drawer. Assembly of the drawers is completed then with the addition of the face panels (parts V for the small drawers; W for the large drawer). Use glue here, and drive 1" brads through the drawer fronts (R or S) into the face panels. Again using 1" brads, fasten the hardboard rear panel (M) to the back of the armoire, driving the brads through M into parts A,



Use 1" brads to attach M to A, D, and E. Miter front ends of boards P and attach to A. Miter both ends of O and attach to L.

attached next. First, miter both ends of the front base piece (O) at a 45° angle, and miter the matching end of each of the two side base pieces (P). Parts P are then glued and nailed to parts A, while O is fastened to the face frame bottom (L).

Cabinet. The cabinet door comprises parts X, Y, and Z. Start by routing out a 1/8"-wide x 3/8"-deep channel centered along the inside edges of parts X and Y. The cabinet door panel (Z) is nestled within these channels and secured in place with glue. The excess channel space on both ends of each part X may be concealed with a wood filler. Otherwise, **cut** four 1/8" x 3/8" x 1 1/2" splines from scrap and glue into place. Hang the door with hinges mounted 4" in from each end. Attach wooden knobs to the drawers and cabinet door, sand the entire unit and finish as desired.

Assuming you've left out the middle shelf (C), it's an easy matter **to** make the cabinet compartment into a closet for hanging clothes. All that's needed is a pair of 1 3/8" diameter clothes pole sockets and a 17" length of 1 3/8" dowel. Just locate the sockets 3" below the cabinet ceiling (C), and centered on parts A and B. Detail 5 shows the arrangement found in the closet option.

and L, as shown in the schematic. The horizontal parts J, K, and L are spaced 6" apart in the frame to make room for the drawers. Clamp the completed face frame securely, and allow all glue to dry before continuing.

The face frame assembly is then carefully positioned on the cabinet compartment and fastened into place. Now attach the remaining side panel (A) to the construction. Use

B, D, and E. The front and side base pieces are

MATERIALS LIST

Qty.	Size	Material	Items
1	1/8" x 48" x 96"	Hardboard	M,T,U
1	1/2" x 48" x 96"	Mahogany plywood	Q,R,S
1	1/8" x 13" x 31"	Pine or birch plywood	Z
47	Board feet, 3/4"	Pine	A,B,C,D,E,F,G, H,I,J,K,L, ,N,O,P,V,W,X,Y

CUTTING SCHEDULE

All measurements are in inches. All material is pine unless otherwise indicated.

Item	Qty.	Size	Description
A	2	3/4 x 16 1/4 x 44 1/2	Sides
B	1	3/4 x 16 1/8 x 37 1/2	Vertical divider
C	3	3/4 x 16 1/8 x 17 1/4	Shelves
D	1	3/4 x 2 x 34 1/2	Upper back crosspiece
E	1	3/4 x 2 x 16 1/2	Lower back crosspiece
F	7	3/4 x 2 x 16 1/8	Drawer supports
G	3	3/4 x 1 1/2 x 15 3/8	Top supports
H	2	3/4 x 1 1/2 x 44 1/2	Face frame sides
I	1	3/4 x 1 1/2 x 34	Face frame vertical divider
J	2	3/4 x 1 x 33	Face frame top drawer guides
K	4	3/4 x 1 x 15 3/4	Face frame drawer guides
L	1	3/4 x 2 1/2 x 33	Face frame bottom
M	1	1/8 x 35 1/4 x 44 1/2 (hardboard)	Rear panel
N	1	3/4 x 17 3/4 x 37 1/2	Armoire top
O	1	3/4 x 1 5/8 x 37 1/2	Front base piece
P	2	3/4 x 1 5/8 x 17 3/4	Side base pieces
Q	12	1/2 x 5 5/8 x 16 (mahogany ply.)	Drawer sides
R	10	1/2 x 5 1/4 x 13 3/4 (mahogany ply.)	Small drawer fronts and backs
S	2	1/2 x 5 1/4 x 31 (mahogany ply.)	Top drawer front and back
T	5	1/8 x 14 1/4 x 16 (hardboard)	Small drawer bottoms
U	1	1/8 x 16 x 31 1/2 (hardboard)	Top drawer bottom
V	5	3/4 x 16 3/8 x 16 1/4	Small drawer face panels
W	1	3/4 x 6 3/8 x 33 1/2	Top drawer face panel
X	2	3/4 x 2 x 34 3/8	Cabinet door frame verticals
Y	2	3/4 x 2 x 12 1/4	Cabinet door frame horizontal
Z	1	1/8 x 12 3/4 x 30 7/8 (ply.)	Cabinet door panel

Hardware:

- 6 pair 16" drawer guides
- 8 1 1/2" diameter wooden knobs
- 1 pair door hinges
- 1 small box 1" brads
- 1 small box 1 1/4" finish nails
- 1 bottle yellow carpenter's glue
- 1 quart finish

