

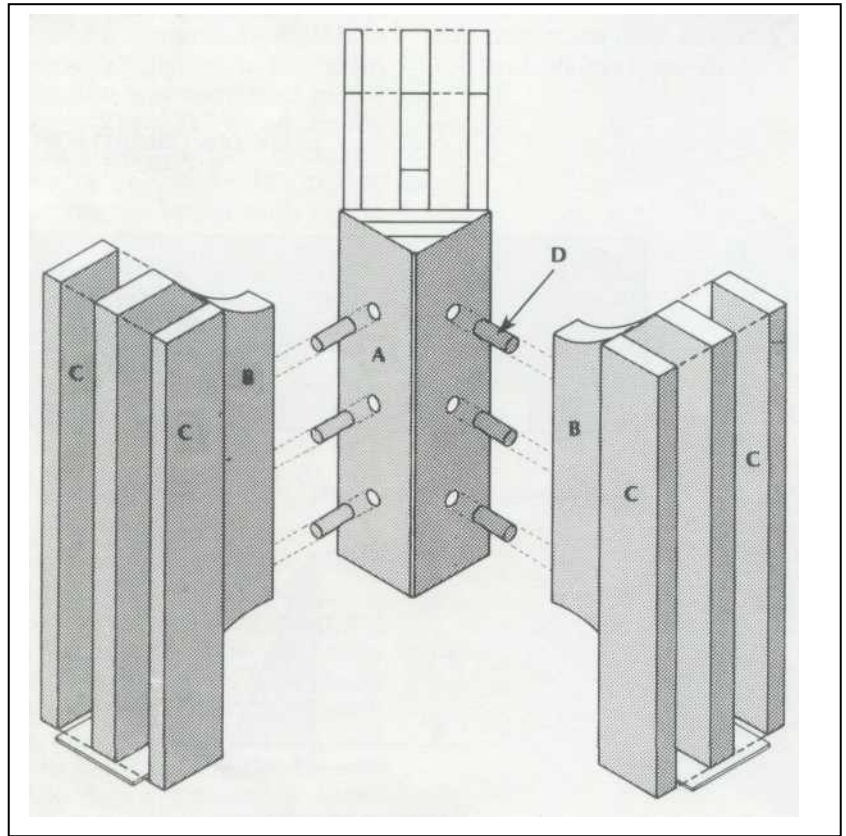
*171*

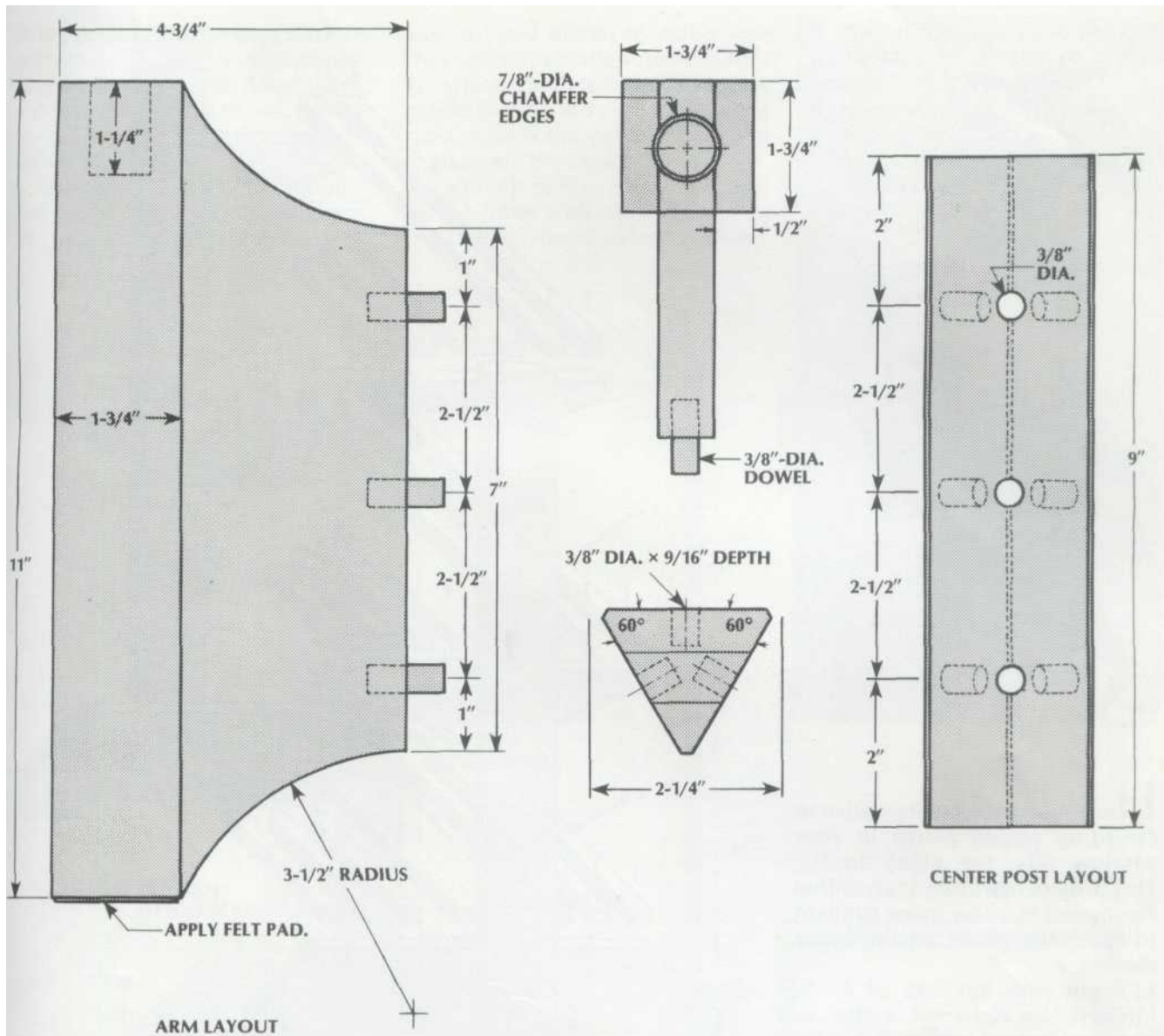
# CANDELABRA



This candelabra will add a touch of elegance to most any table or room. The attractive centerpiece holds three candles, making it just right for a quiet candlelight dinner or for emergency lighting.

1. Cut all pieces to size according to the dimensions given. The triangular center post (A) can either be cut from a solid piece of wood or from glued-up stock. In the latter case, it is a good idea to make some of the 60° beveled cuts prior to gluing up the material and finishing the job with a hand plane and belt sander. Flatten the sharp corners of the post with a sander or block plane.
2. Cut out the arms (B) on a band-saw, then sand the edges smooth with a drum sander.
3. Drill matching sets of 3/8"-diameter holes 9/16" deep into the center post and the inside edge of each arm for doweling the pieces together. Center the middle hole along the length of each piece and space the remaining holes 2-1/2" apart as shown.
4. Glue the sides (C) to the arms, keeping their outer edges flush. After the glue has dried, sand the assembled arms.
5. Center and drill a 7/8"-diameter hole 1-1/4" deep in the top of each arm to hold a candle. Chamfer the edges of the holes with a 1"-diameter countersink or by hand sanding; this will allow the candles to fit in more easily.
6. Attach the arms to the center post using glue and dowels (D). Clamp until the glue has dried. Finish the candelabra as desired. Glue felt pads to the bottoms of the arms to prevent furniture from being scratched.





### LIST OF MATERIALS

(finished dimensions in inches)

|          |               |   |
|----------|---------------|---|
| <b>A</b> | Center post   | $2\text{-}1/4 \times 2\text{-}1/4 \times 2\text{-}1/4 \times 9$ |
| <b>B</b> | Arms (3)      | $3/4 \times 4\text{-}3/4 \times 11$                             |
| <b>C</b> | Sides (6)     | $1/2 \times 1\text{-}3/4 \times 11$                             |
| <b>D</b> | Dowels (9)    | $3/8 \text{ dia.} \times 1$                                     |
|          | Felt pads (3) | $1\text{-}3/4 \times 1\text{-}3/4$                              |
|          | Wood glue     |   |